

# Diamaster WhisperCut®

The light and quiet cutterhead  
with PLUS efficiency



# Light, quiet and efficient

The processing of panel material requires light and quiet tools at the same time in order to minimize the strain on man and machine as far as possible.

The light and quiet Diamaster WhisperCut® cutterhead is specially designed to reduce such strains. Due to its optimized tool body shape and low weight, noise pollution during jointing and rebating is significantly reduced and the quality of the workplace is improved. The resharpenability of the system with replaceable cutting edges also guarantees high cost efficiency. Optionally, users can change the cutting edges quickly and easily on site.

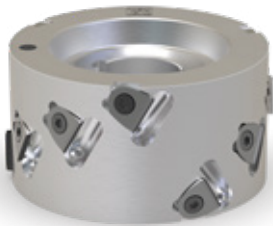
## YOUR BENEFITS

- Light and quiet
- High cost efficiency
- Reduced set-up times
- Perfect processing results

## AT A GLANCE

- Tool body made of light metal
- Excellent chip collection through DFC®-technology
- From diameter 60 mm
- Available from stock
- Diamond-tipped

## The WhisperCut® system line



### WhisperCut®

**The light and quiet cutterhead**

- Cutting edges can be replaced on site or repaired by Leitz Service
- Up to 3 times resharpenable

### WhisperCut® PLUS

**The cutterhead with PLUS efficiency**

- Up to 10 times resharpenable
- Available in WhisperCut® EdgeExpert design
- Can be mounted on clearance-free adaptors such as HSK 32 R or hydro



### WhisperCut® EdgeExpert

**The specialist for zero-joint technology**

- Particularly suitable for zero-joint technology
- Up to 3 times resharpenable
- Available in WhisperCut® PLUS design
- Clearance-free adaptors such as HSK 32 R or hydro are recommended



### WhisperCut® Hydro

**Cutterhead with hydro adaptor for maximum product quality**

- Up to 3 times resharpenable
- Integrated hydro adaptor for highest concentricity and axial run-out accuracy

### WhisperCut® HSK 32 R

**Clearance-free connection between jointing cutter and machine**

- Up to 3 times resharpenable
- Integrated HSK-adaptor for highest concentricity and axial run-out accuracy
- Suitable for spindles with HSK 32 R adaptor



## Your benefits due to ...



### SUSTAINABILITY

#### Low-noise, light and reusable

- Significant noise reduction of up to 5 dB(A) thanks to optimized tool body shape
- Reduced load on spindle and machine due to halved weight thanks to light metal tool
- Resource-saving due to reusable tool body
- Only worn cutting edges need to be replaced



### EFFICIENCY

#### Reduces costs significantly

- Less tool costs due to reusable tool body
- Low costs per running metre due to resharpenable and replaceable cutting edges
- Constant tool diameter when using exchangeable knives
- No setting times after knife change when using exchangeable knives



### QUALITY & FLEXIBILITY

#### Perfect processing quality and flexible application

- Excellent product quality due to maximum concentricity and balancing quality
- Excellent workpiece finishes due to DFC®-technology
- Perfect quality even with demanding panel materials
- The original – proven WhisperCut®-technology since 2009
- Mounting possible on a wide variety of adaptors
- Use on throughfeed and stationary machines
- Systems can be combined with each other

## Quick and easy tool maintenance – two options

### Resharpener of WhisperCut® cutting edges by Leitz Service:

- Diamond cutting edges are resharpened in the tool body by Leitz Service
- Necessary for WhisperCut® PLUS and WhisperCut® EdgeExpert

#### YOUR BENEFITS

- Lower costs per running metre in the long term
- Continuously perfect edge quality
- Uniform service and quality standards worldwide
- Service in manufacturer quality
- Personal contact partners in your proximity
- Reliable collection and delivery of tools

### Replacement of WhisperCut® cutting edges by the user:

- Knife replacement on site
- Installation of ready-to-use eroded disposable cutting edges
- Possible with WhisperCut®, WhisperCut® HSK 32 R and WhisperCut® Hydro

#### YOUR BENEFITS

- Constant tool diameter, no adjustment of machine settings necessary
- Only replacement of worn cutting edges necessary

