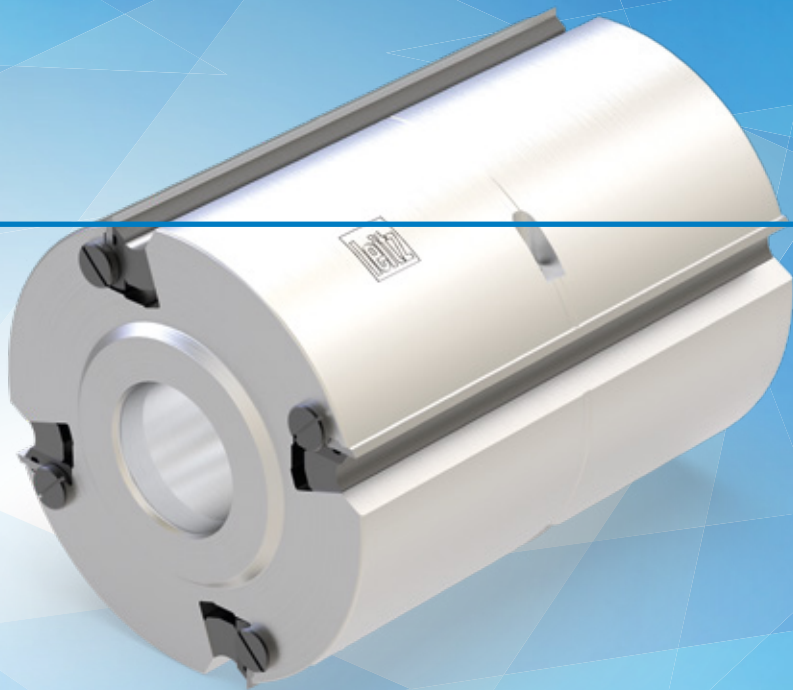




CentroPlan Planing Cutterhead

Ready-to-paint surface finish,
easy handling



Cost-optimized processes and perfect machining results can rarely be reconciled with common planing systems.

With the CentroPlan planing cutterhead from Leitz, it is possible to reduce production costs and at the same time generate perfect finish qualities without sacrificing the performance of the overall system. In addition, the tool is very sustainable due to the use of serviced turnblades.

YOUR BENEFITS

- Perfect planing finishes
- Easy and fast knife change
- Long tool life

AT A GLANCE

- Cutting edge clamping without screws
- Constant diameter without setting gauge
- Available with cutting width 130 / 166 / 236 mm
- Diameter 125 mm
- For 4-side planing and profiling machines
- For machining soft/hardwood and thermoplastics
- Cutting material HW



2-fold

- TURNBLADES WITH RAZOR-SHARP CUTTING EDGE

-100 %

- NO ADJUSTMENT REQUIRED ON THE MACHINE

100 %

- REUSE OF SERVICED TURNBLADES

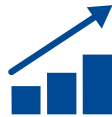
Your benefits due to ...



QUALITY

Perfect planing finishes due to high-end product

- Long tool life due to solid cutting edge
- Best planing results due to cutting edges with microfinish cut
- Perfect machining quality due to high concentricity, as knives are positioned directly in the support body



EFFICIENCY

Time saving and reduction of error factors

- No setting device required due to repeatable knife positioning
- Reduced service time due to quick knife change
- Short machine downtimes due to constant diameter tool



SUSTAINABILITY

Resource-saving and environmentally conscious

- Resource-saving use of cutting material through the use of serviced HW knives

CentroPlan Planing
Cutterhead:
Perfect finishes
with easy handling!



www.leitz.org

